

## סתקן קיר לתליית אופניים סהגלגל

מק"ט: 300405PL



### הוראות התקנה

#### Expansion bolts:

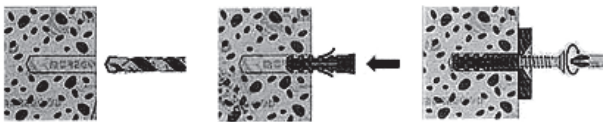


X 4

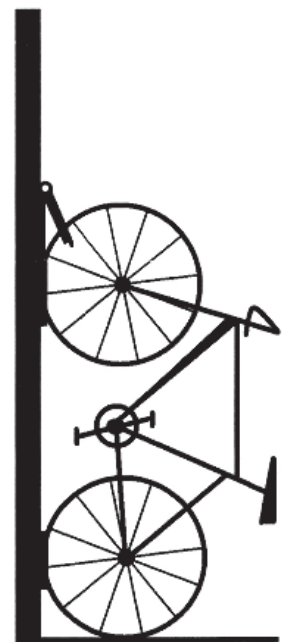


X 4

1. Mark four installation points on the wall.
2. Drilling on the wall with a 5 mm drill.
3. Knock the plastic expansions into the wall.
4. Lock the wall hanger with 4 screws.



<16KGS



16KGS

#### Warning:

Before installation, please make sure that the wall can bear the weight of bike.